

Community Spotlight:



EMSHIH DEVELOPMENTS INC.

We spoke with Dr. Michael Shih about integrating sustainability into old and new buildings

Tell us about the large solar panel field you installed in 2024

We put in a 250 kW installation of 596 panels on the roof of our building at 901 Guelph Line. According to Burlington Hydro, which worked with us and Absolar on the project, this is the largest net metering solar panel installation in a single location in Burlington. The panels generate 90% of the electricity used in the 250,000 square foot building.

Why go solar now?

We'd been looking into solar for years. 2024 made sense due to new government incentives and improved efficiency in solar technology. Electricity utility companies are having trouble keeping up with increasing demand due in part to electric vehicle and data centre electrical needs. Net-metered solar produces electricity during the daytime peak demand period.

Is Burlington a good spot for solar?

Burlington is a great location for solar energy, with plentiful sunshine and typically moderate temperatures.

What inspires you to include sustainability in your projects?

Being energy efficient is just common sense. It's better for everyone. I just don't like to waste energy. It's natural to me to turn off the lights when leaving a room.

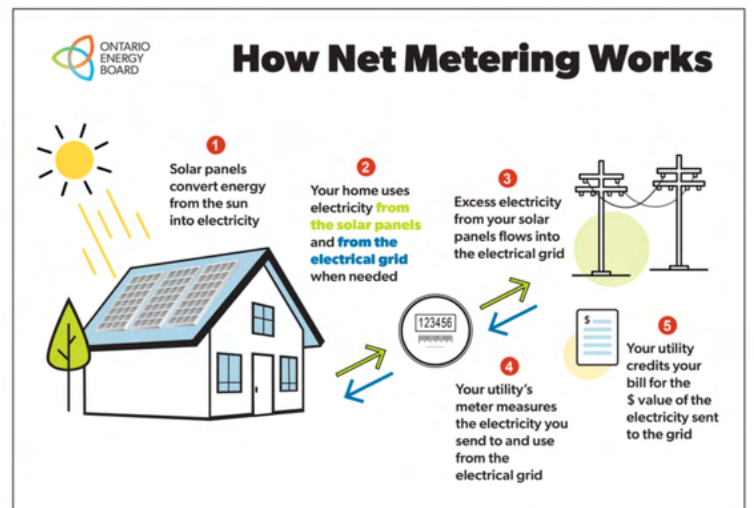
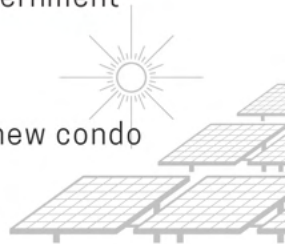
Please note that BurlingtonGreen does not promote or warranty the organizations, products or services featured in our Community Spotlights.



What other sustainable features do you include in your buildings?

At 901 Guelph we replaced the seals on all 30 loading docks to improve insulation and heat retention in winter. We also replaced an old inefficient, large boiler system with motion sensed radiant heat that turns on when people walk by. In the office area housing the WorkWell co-working space, we installed energy-efficient heat pumps, which are even more cost effective for residential use, with current government subsidies.

We're including geothermal heat in new condo towers.



Learn more at <https://emshih.com/>